

Dear Bristol Borough Council Members,

Southeastern Pennsylvania Transportation Authority (SEPTA) and Delaware Valley Regional Planning Commission (DVRPC) have partnered with Bristol Borough on a “Mobility Hub” project to encourage walking and biking to and near Bristol Station. The project aims to advance the [2019 Historic Bristol Borough Active Transportation Plan](#), which highlighted the area around Bristol Station as one of the eight proposed Active Routes. The project working group includes a variety of partners, whose roles are outlined in the table below.

Organization	Role
DVRPC	Contribute funding, project and partner coordination
SEPTA	Contribute funding, guide project to align with SEPTA goals
Bristol Borough leadership	Guide project to align with goals, provide design feedback
Bristol Borough Public Works	Install quick-build treatments (i.e., signage, benches, planters)
Gilmore & Associates	Provide engineering guidance
Bucks County Planning Commission	Guide project to align with County goals

The following design package includes beautification efforts, making visible connections to trails and buses, and quick-build treatments like painted curb extensions and bicycle markings. Costs associated with the package (estimated to total \$12,500) will be paid for by SEPTA and DVRPC. **There will be no direct cost to Bristol Borough to implement these designs.** Proposed designs are summarized in the table below.

	Improvement	Summary
1	Garden St bike rack mural	Ground and wall application
2	Washington St bike rack mural	Ground and wall application
3	Crossing at Garden St and Jefferson St	Curb extensions on Garden St
4	Rushbus stop amenities	Bus stop signage and bench
5	129 bus stop amenities (southbound)	Bus stop signage and bench
6	129 bus stop amenities (northbound)	Bus stop signage and bench
7	Wayfinding system	Stick-on wayfinding system along the sidewalk to connect train passengers to 129 bus stop and trail network
8	Jefferson St shared lane bicycle markings	Sharrows from Garden St to the D& trail crossing

**The design package will be presented by DVRPC at the next Council meeting on April 8th, 2024 at 7:00pm.** Please review the following designs in advance of the meeting and come with any questions or comments you may have.

# Bristol Station Mobility Hub

---

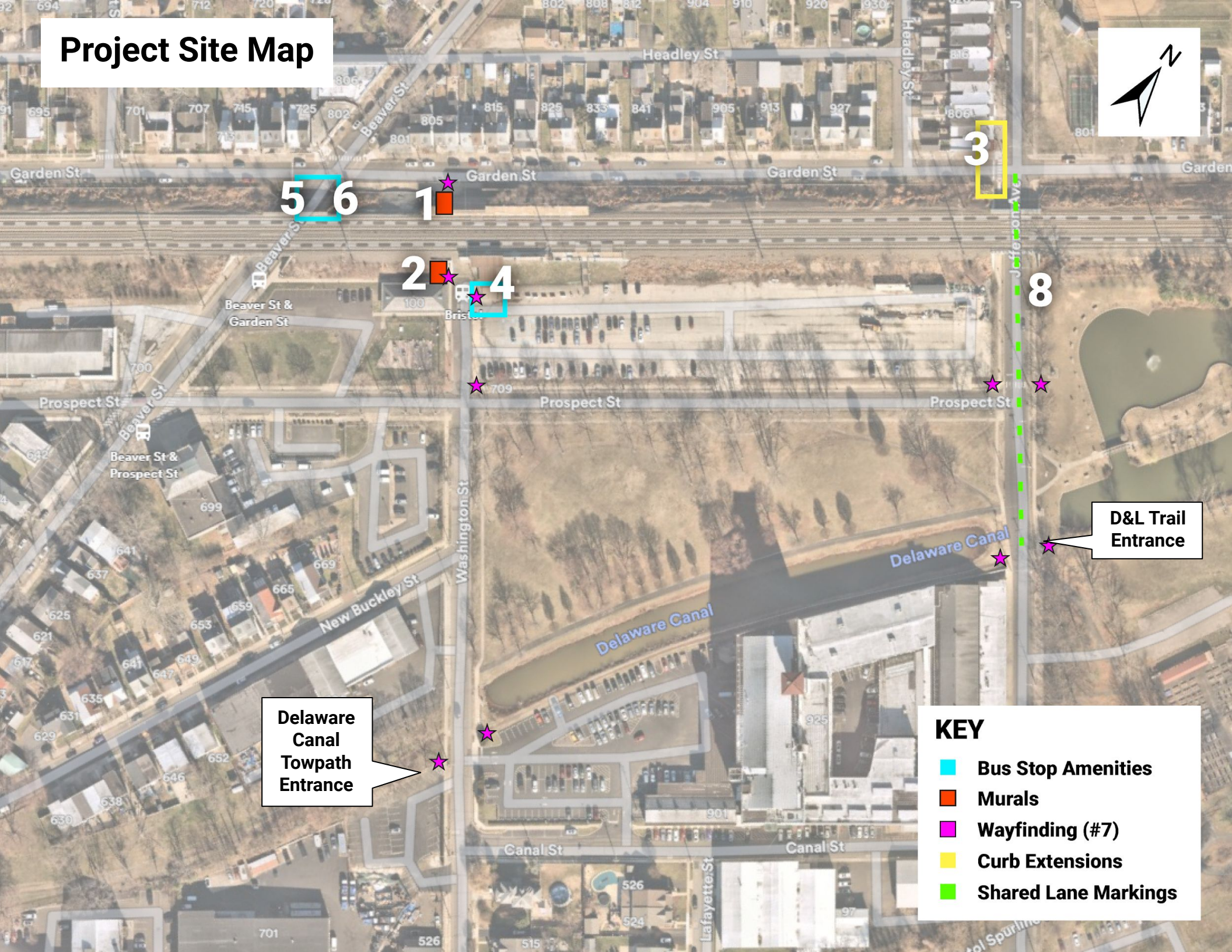


# Design Package Contents

	Improvement	Summary	Purpose
Beautification			
1	Garden St bike rack mural	Ground application and wall application. May be painted by artist or use stick-on vinyl depending on cost.	Create gateway to the station and draw attention to bike racks
2	Washington St bike rack mural	Ground application and wall application. May be painted by artist or use stick-on vinyl depending on cost.	Create gateway to the station and draw attention to bike racks
Pedestrian Access			
3	Crossing at Garden St and Jefferson St	Curb extensions on Garden St	Shorten pedestrian crossing distance and improve sightlines
Connections			
4	Rushbus stop amenities	Signage and bench	Increase visibility of bus stop and provide place to sit
5	129 bus stop amenities (southbound)	Signage and bench	Increase visibility of bus stop and provide place to sit
6	129 bus stop amenities (northbound)	Signage and bench	Increase visibility of bus stop and provide place to sit
7	Wayfinding system	Stick-on wayfinding system on the sidewalk	Connect rail passengers to 129 bus stops and trail network
Bicycle Access			
8	Jefferson St shared lane markings	Sharrows from Garden St to the trail crossing	Indicate a shared lane environment for bicycles and drivers

*\*Numbers correspond to project site map on the following page*

# Project Site Map



Delaware Canal Towpath Entrance

D&L Trail Entrance

**KEY**

- Bus Stop Amenities
- Murals
- Wayfinding (#7)
- Curb Extensions
- Shared Lane Markings

# Project Materials (cost paid by DVRPC/SEPTA)



## Signage

1. Stick-on ground vinyl
2. Rushbus sign
3. Circuit Trails sign



## Beautification

1. Planters
2. Bus stop bench
3. Historic murals



## Painted applications



1. Curb extensions
2. Shared lane markings

# [1+2] Bike Rack Murals



GARDEN ST

**KEY**

-  Mural
-  Wayfinding

WASHINGTON ST



# [1] Garden St Bike Rack Mural Mockup\*

*\*White boxes indicate mural placement. Images are inspiration for mural content.*



## [2] Washington St Bike Rack Mural Mockup\*

*\*White boxes indicate mural placement. Images are inspiration for mural content.*



### [3] Crossing at Garden & Jefferson



GARDEN ST

JEFFERSON ST

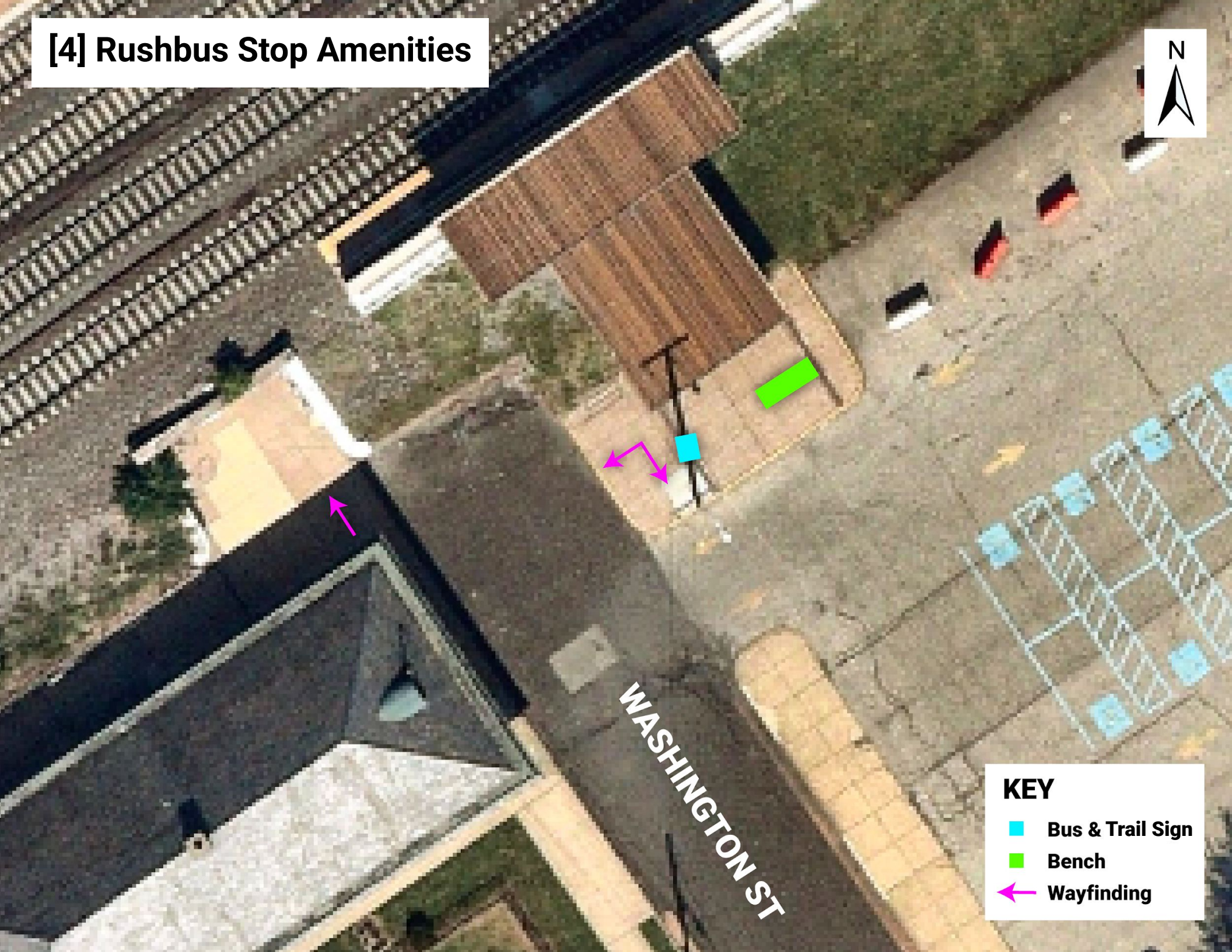
13ft

27ft

**KEY**

- Painted Curb Extension
- Planter

# [4] Rushbus Stop Amenities



**KEY**

-  Bus & Trail Sign
-  Bench
-  Wayfinding

WASHINGTON ST

# [4] Rushbus Mockup



# [5+6] 129 Bus Stop Amenities\*

*\*Assumes SEPTA will re-site 129 bus stops (currently midblock between Garden St and Prospect St) to the intersection of Beaver St and Garden St*



- KEY**
-  Bus Sign
  -  Bench

**[5] 129 Bus Mockup (Southbound)**



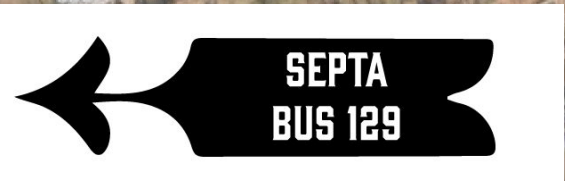
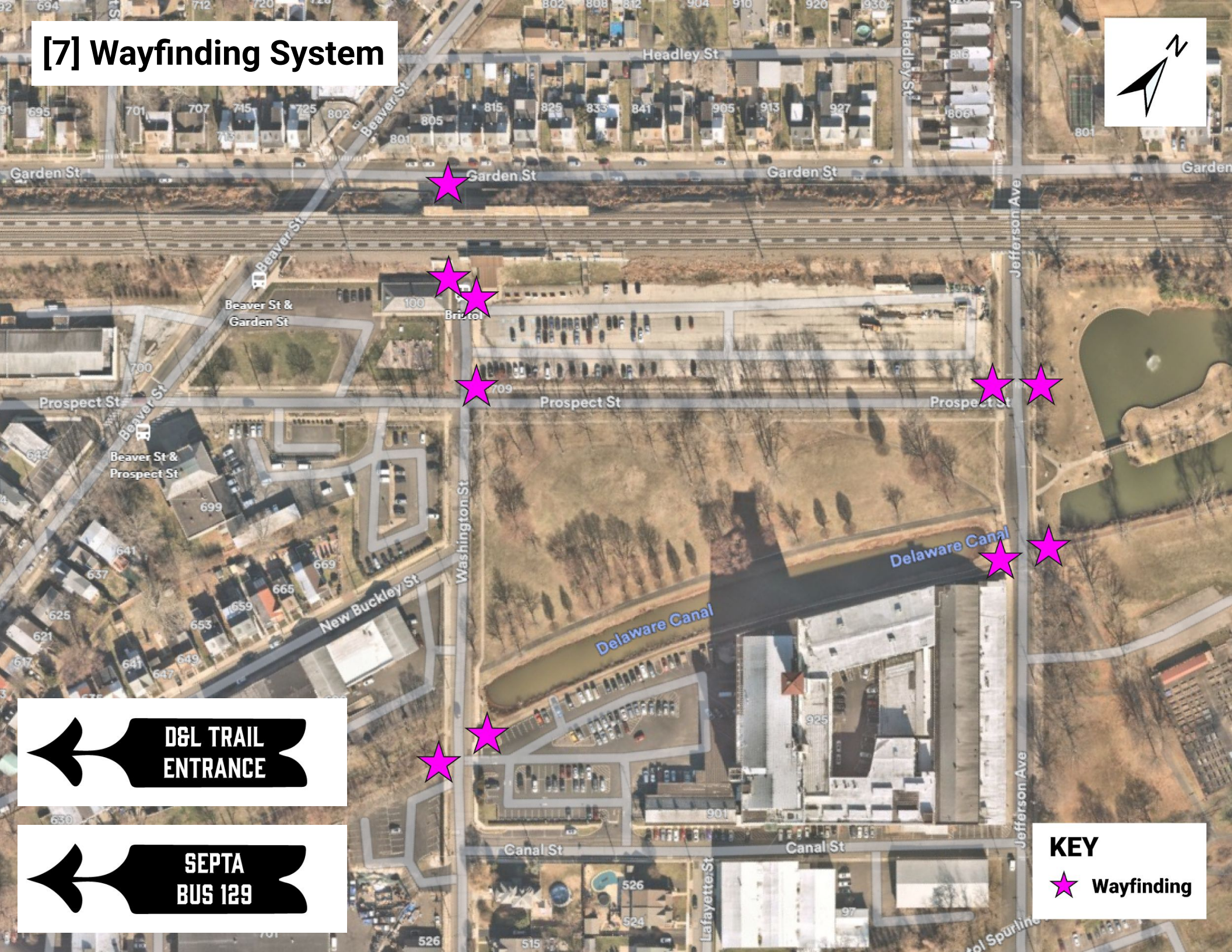
**BEAVER ST**

# [6] 129 Bus Mockup (Northbound)



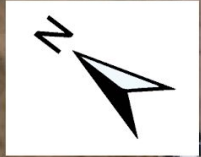
**BEAVER ST**

# [7] Wayfinding System



**KEY**  
★ Wayfinding

# [8] Jefferson St Shared Lane Bicycle Markings



GARDEN ST

JEFFERSON ST

D&L Trail Entrance

D&L Trail Entrance

### KEY

← Wayfinding

□ Shared Lane Marking

